



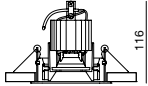
cardan50frame

8112 960

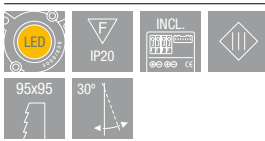


8112 960 319	10,3W.	1.405	136,4lm/W.	spot	3.000
8112 960 325	10,3W.	1.405	136,4lm/W.	medium	3.000
8112 960 337	10,3W.	1.405	136,4lm/W.	flood	3.000
8112 960 419	10,3W.	1.486	144,3lm/W.	spot	4.000
8112 960 425	10,3W.	1.486	144,3lm/W.	medium	4.000
8112 960 437	10,3W.	1.486	144,3lm/W.	flood	4.000
code	module W	lm	efficiency	beam angle	°K

CEILING CUT  
95x95



106x106

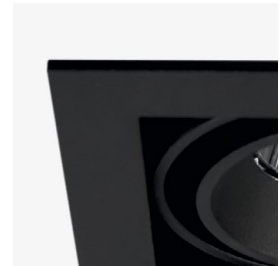


colores\_colors



materiales\_materials

aluminio inyectado  
y acero  
die cast aluminium  
and steel



cardanLED70



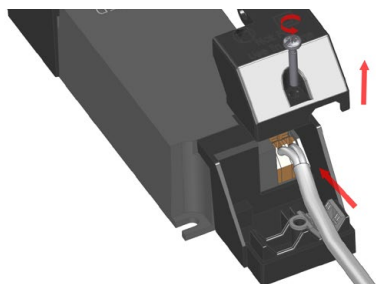
8060

en la imagen\_in the picture



| cardan50frame  
8112 960

## INSTRUCCIONES\_INSTRUCTION



Desconectar la corriente.

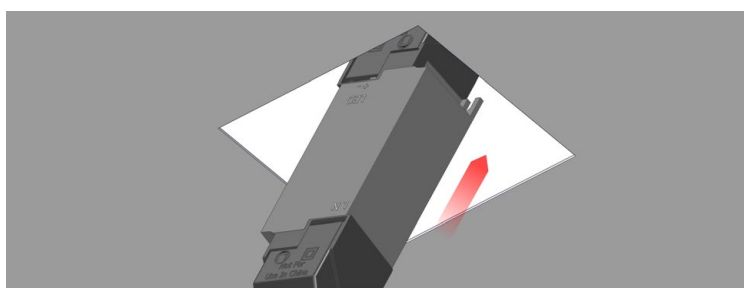
*Disconnect the mains.*

Realizar el corte de techo con la medida precisa indicada.

*Make a precise ceiling cut with the indicated dimensions.*

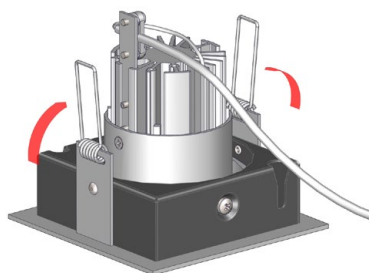
Conectar el latiguillo al driver de la luminaria.

*Connect the cord to the driver of the luminaire.*



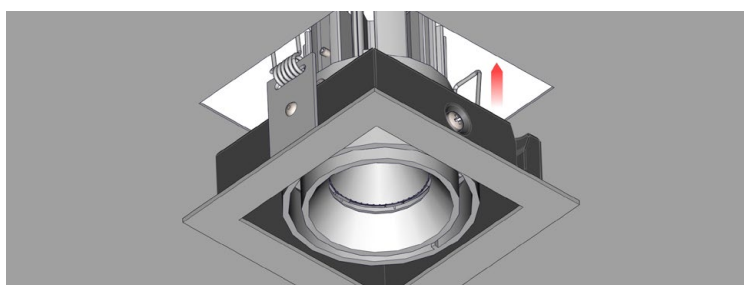
Ocultar el driver y el latiguillo en el falso techo.

*Hide the driver and the cord in the false ceiling.*



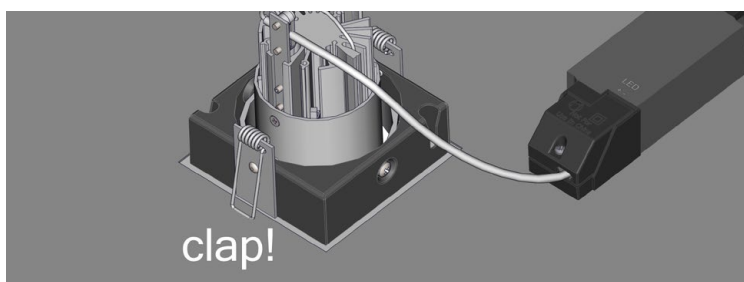
Forzar los muelles de la luminaria hasta girarlos 180°

*Force the springs of the luminaire until turning them 180°*



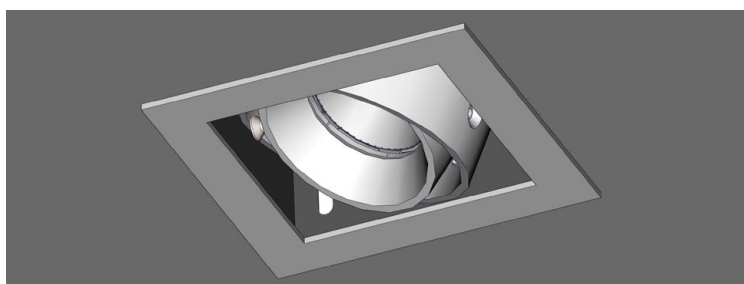
Introducir la luminaria y el resto de cable con cuidado de no dañar el falso techo.

*Insert the luminaire and the rest of the cable, being careful not to damage the false ceiling.*



Deslizar lentamente hasta que los muelles presionen y fijen la luminaria contra el falso techo.

*Slide slowly until the springs press and fix the fixture against the false ceiling.*



La luminaria está lista, orientar y conectar la corriente.

*The luminaire is ready, adjust and connect the mains.*