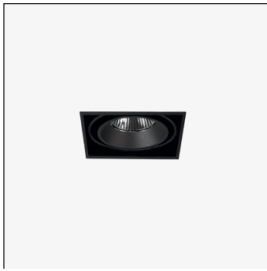


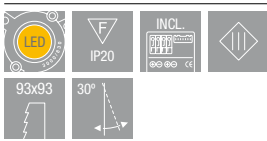
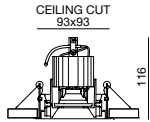


cardan50miniframe

8121 960



8121 960 319	10,3W.	1.405	136,4lm/W.	spot	3.000
8121 960 325	10,3W.	1.405	136,4lm/W.	medium	3.000
8121 960 337	10,3W.	1.405	136,4lm/W.	flood	3.000
8121 960 419	10,3W.	1.486	144,3lm/W.	spot	4.000
8121 960 425	10,3W.	1.486	144,3lm/W.	medium	4.000
8121 960 437	10,3W.	1.486	144,3lm/W.	flood	4.000
code	module W	lm	efficiency	beam angle	°K



colores_colors



materiales_materials

aluminio inyectado
y acero
die cast aluminium
and steel

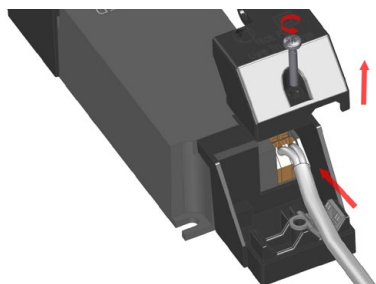


cardanLED70



8060

en la imagen_in the picture



Desconectar la corriente.

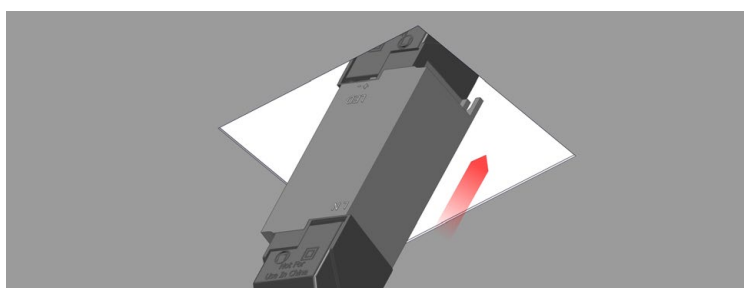
Disconnect the mains.

Realizar el corte de techo con la medida precisa indicada.

Make a precise ceiling cut with the indicated dimensions.

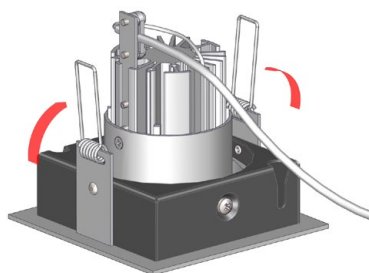
Conectar el latiguillo al driver de la luminaria.

Connect the cord to the driver of the luminaire.



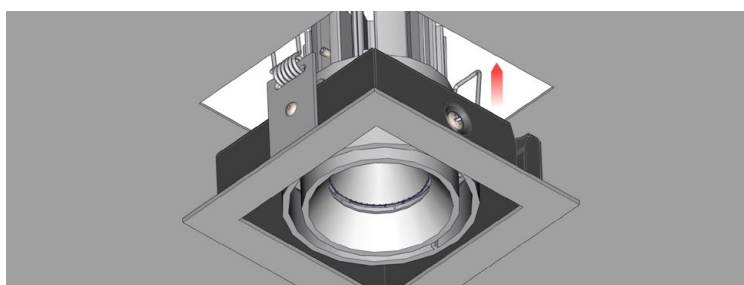
Ocultar el driver y el latiguillo en el falso techo.

Hide the driver and the cord in the false ceiling.



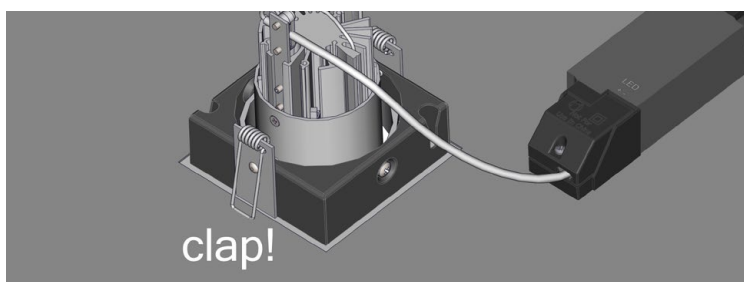
Forzar los muelles de la luminaria hasta girarlos 180°

Force the springs of the luminaire until turning them 180°



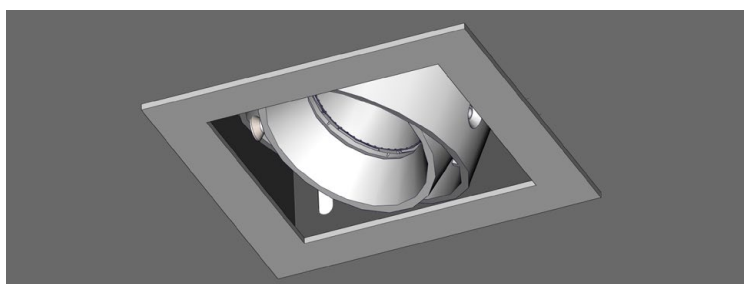
Introducir la luminaria y el resto de cable con cuidado de no dañar el falso techo.

Insert the luminaire and the rest of the cable, being careful not to damage the false ceiling.



Deslizar lentamente hasta que los muelles presionen y fijen la luminaria contra el falso techo.

Slide slowly until the springs press and fix the fixture against the false ceiling.



La luminaria está lista, orientar y conectar la corriente.

The luminaire is ready, adjust and connect the mains.