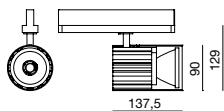


5178 960_961_962 B



| | | | | | |
|---------------|----------|-------|------------|------------|-------|
| 5178 960 314B | 10W. | 1.900 | 190lm/W. | spot | 3.000 |
| 5178 960 324B | 10W. | 1.900 | 190lm/W. | medium | 3.000 |
| 5178 960 338B | 10W. | 1.900 | 190lm/W. | flood | 3.000 |
| 5178 960 414B | 10W. | 2.000 | 200lm/W. | spot | 4.000 |
| 5178 960 424B | 10W. | 2.000 | 200lm/W. | medium | 4.000 |
| 5178 960 438B | 10W. | 2.000 | 200lm/W. | flood | 4.000 |
| 5178 961 314B | 19W. | 2.600 | 137lm/W. | spot | 3.000 |
| 5178 961 324B | 19W. | 2.600 | 137lm/W. | medium | 3.000 |
| 5178 961 338B | 19W. | 2.600 | 137lm/W. | flood | 3.000 |
| 5178 961 414B | 19W. | 2.750 | 145lm/W. | spot | 4.000 |
| 5178 961 424B | 19W. | 2.750 | 145lm/W. | medium | 4.000 |
| 5178 961 438B | 19W. | 2.750 | 145lm/W. | flood | 4.000 |
| 5178 962 314B | 25W. | 3.500 | 140lm/W. | spot | 3.000 |
| 5178 962 324B | 25W. | 3.500 | 140lm/W. | medium | 3.000 |
| 5178 962 338B | 25W. | 3.500 | 140lm/W. | flood | 3.000 |
| 5178 962 414B | 25W. | 3.650 | 146lm/W. | spot | 4.000 |
| 5178 962 424B | 25W. | 3.650 | 146lm/W. | medium | 4.000 |
| 5178 962 438B | 25W. | 3.650 | 146lm/W. | flood | 4.000 |
| code | module W | lm | efficiency | beam angle | °K |

CASAMBI
COMPATIBLE



materiales_materials

aluminio extruido y anodizado, metacrilato y acero
extruded & anodized aluminium, methacrylate and steel



Disipador de aluminio extruido anodizado de gran eficacia.



colores

1T 3 8



5178 960_961_962 B



Esta luminaria no es apta para colocar en los perfiles 3553 y 3556 de la familia slot.

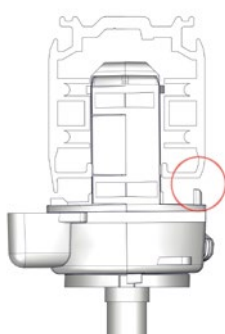
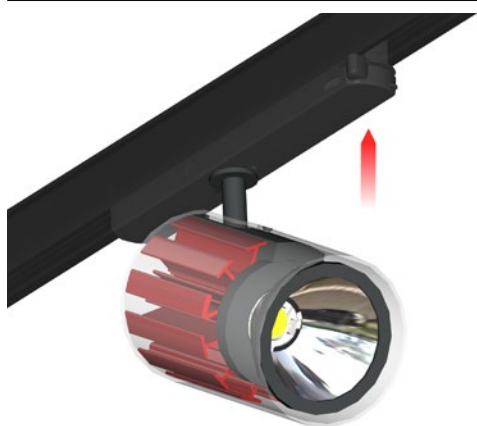
This luminaire is not suitable to be placed in 3553 and 3556 slot family profiles.

Antes de montar el adaptador en el carril, asegúrese de que la corriente está cortada.

Before installing the adapter into the track, make sure the power is switched off.

Colocar la leva del adaptador en la posición correcta

Connect the spotlight into the triphasic track by plugging its adaptor correctly.

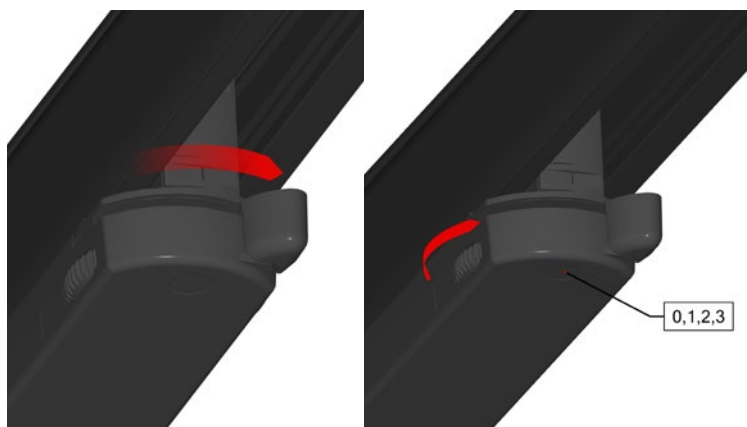


Comprobar la posición correcta para evitar daños.

Check the right position to avoid damage.

Insertar el adaptador en el carril.

Insert the adapter in the track.



Girar la leva del adaptador y seleccionar la fase mediante la rueda dentada.

Lock the lever to its correct position and adjust the wheel to the correct phase / circuit.



La luminaria está lista. Orientar y conectar la corriente.

Adjust the fixture and switch on the power.